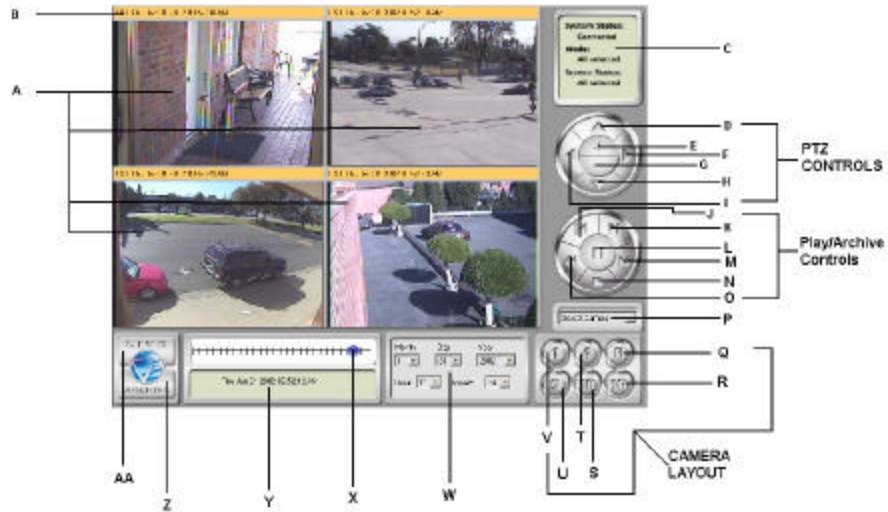


The Applet



KEYS

- A: View Screens
- B: Time/Date Bar
- C: System Status

Pan/Tilt/Zoom (PTZ)

- D: Tilt Up
- E: Zoom In
- F: Pan Right
- G: Zoom Out
- H: Tilt Down
- I: Pan Left

Play/Archive Controls

J: Move Back One Frame At A Time (In Archive Mode)
K: Move Ahead One Frame At A Time (In Archive Mode)
L: Play/Pause (Pause In Archive Mode Only)
M: Forward (In Archive Mode)
N: Stop
O: Rewind (In Archive Mode)
P: Camera Select

Camera Layout Controls

Q: 6 Camera Screen View
R: 16 Camera Screen View
S: 10 Camera Screen View
T: 4 Camera Screen View
U: 9 Camera Screen View
V: 1 Camera Screen View (displays full screen mode highlighted)
W: Date/Time Dropdown Menu
X: Time Scroll Bar
Y: Date/Time Stamp
Z: Archive Button (Activates Archive Mode)
AA: Live Button (Activates Live Mode if in Archive Mode)

LIVE VIEWING

Live View is viewing the camera images in present time.

1. To select all cameras click on a number from the camera layout buttons on the bottom right hand corner 1,4,6,9,10 or 16, depending on which multi-camera view layout you desire. (Example, if you have 5 cameras and you wish to view all cameras simultaneously then you would click **6** to select all).



2. To access a single camera in full screen mode, simply double click on the desired camera viewer screen or select camera by clicking on it once and clicking on the “**1 button**”. To return to the previous multi-camera view, double click directly on the full screen or click the “**6 button**” again.

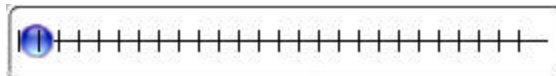
ARCHIVE



To view archived footage¹ click the **ARCHIVE** button on the lower left hand corner of the screen. Choose the desired camera or cameras to view by clicking on the camera view screen or selecting all from the camera layout section.



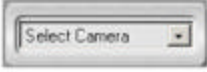
1. You will notice that the **System Status** applet on the top right hand corner has changed from;
Mode: **LIVE**
to;
Mode: **ARCHIVE**
and from;
Screen Status: **PLAYING**
to;
Screen Status: **STOPPED**
You are now in archive view.
2. To the right of the **LIVE** button there is a slider bar. It is use to scroll archive date and time. Action events are indicated by colored markings along the slider bar.



As you scroll you will see date and time stamps underneath the scroll bar. If you need to view a specific date and time, to the right of the scroll bar is a **DATE/TIME** dropdown menu. Choose the date and time that you desire to view. Once you have selected a camera view screen, or all camera view screens, click the **Play** button. (Note your Vprotect unit is still recording while you are in archive mode).

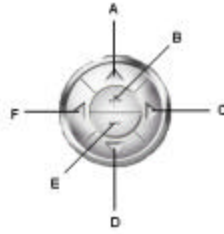
3. To control archive viewing use the **Play Menu** above the **Select Camera Dropdown Menu**. This menu is very similar to the controls of a VCR. In the middle you have **PLAY** ► and **PAUSE** || , to the right is **FORWARD** ►► to the left is **REWIND** ◀◀ and at the bottom you have **STOP** ■ . Above the Forward button is a **STEP FORWARD** ? | which will allow viewing one frame at a time. Above the **REWIND** button is the **STEP BACKWARD** | ? button, which will allow viewing one frame back at time. These features can only be applied to 1 camera at a time.

¹ Please note that while viewing **ARCHIVE** footage you can also view **LIVE** footage by highlighting the camera or cameras that you wish to view.

4. The **SELECT CAMERA** dropdown menu  can be used to change the position of the camera view within the viewing area. Click on camera view screen to select the one you wish to change. You will notice only that camera view is highlighted. Use the dropdown menu to select a different camera to view in that view screen. (Example, if you want camera 1, the upper right hand camera to be in position of camera 2, to the right of camera 1 simply click on the camera select dropdown menu and select camera 2).
5. Registered users can name each camera for easy identification in **MY VPROTECT**.

PTZ (PAN, TILT, ZOOM)

- A: Tilt Up
- B: Zoom In
- C: Pan Right
- D: Tilt Down
- E: Zoom Out
- F: Pan Left



1. The **PTZ** control interface is located above the **Play/Archive** control interface. Choose your **PTZ** camera the camera by clicking on it once. The view screen will become highlighted. Cameras can pan left or right by choosing the right ? or left ? symbols.
2. To tilt the cameras up or down choose the up ? or down ? symbols on the **PTZ** interface.
3. To zoom camera in or out choose **+** to zoom in or ? to zoom out.

Please note that this only works if you have a PTZ camera connected to the site unit.